



# BILLESLEY PRIMARY - WEEK ONE



## Meat Free Monday

## Tuesday

## Wednesday

## Meat Free Thursday

## Friday

Swedish Meatballs in Gravy, Diced Potatoes & Seasonal Vegetables (v)

Loaded Baked Potato Bar Jacket Potatoes and Sweet Potatoes served with a choice of hot and cold fillings

Plant-Powered Hotdog with Baked Potato Wedges, Baked Beans or Salad (v)

Vegetable Lasagne served with Garlic bread, Vegetables or Salad (V)

Breaded Fish Fillet served with Chipped Potatoes, Peas or Baked Beans

Selection of Pizzas with Herby Potatoes, salad or Vegetables (v)

Chicken Tikka Masala with Steamed Rice

Chicken Sausage Hotdog with Baked Potato Wedges, Baked Beans or Salad

Billesley Brunch with Sausage, Egg, Hash Brown, Mushrooms & Baked Beans (v)

Marinated Chicken Wrap served with Chipped Potatoes, Peas or Baked Beans

Jacket Potatoes with Cheese, Beans or Tuna Mayo

Tomato & Basil Pasta (v)

Jacket Potatoes with Cheese, Beans or Tuna Mayo

Cheese Toastie served with Salad (v)

Jacket Potatoes with Cheese, Beans or Tuna Mayo

Yoghurt with a selection of toppings

Orange & Mandarin Jelly

Lorrie's Dessert of the Day

Yoghurt with a selection of toppings

Assorted Ice creams

Salad Bar, Fresh Fruit & Yoghurts available daily

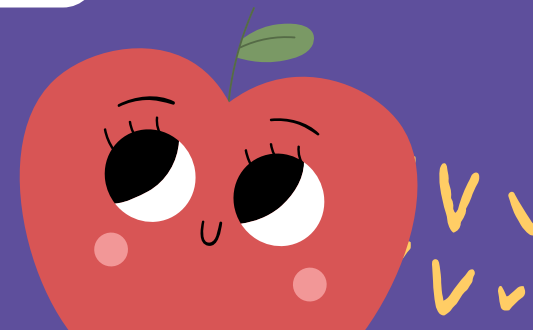
(v) vegetarian

Allergen information may be obtained by contacting the Catering Manager on 0121 464 3419 or [L.mcfie@billesleyschool.co.uk](mailto:L.mcfie@billesleyschool.co.uk)



Light Bite

Dessert





# BILLESLEY PRIMARY - WEEK TWO



## Meat Free Monday

## Tuesday

## Wednesday

## Meat Free Thursday

## Friday

**Veggie Doner Kebab served in a Wholemeal Pitta with Diced Potatoes & Salad (v)**

**Loaded Baked Potato Bar Jacket Potatoes and Sweet Potatoes served with a choice of hot and cold fillings**

**McBillesley's Cheeseburger with Baked Potato Wedges, Baked Beans or Salad (v)**

**Sweet Chilli Quorn & Vegetables served with Steamed Rice (v)**

**Fish Fingers served with Chipped Potatoes, Peas or Baked Beans**

**Selection of Pizzas with Diced Potatoes, Salad or Vegetables (v)**

**Chicken Biryani & Naan Bread**

**Chicken Burger served with Baked Potato Wedges, Baked Beans or Salad**

**Tomato, Lentil & Vegetable Pasta Bake with garlic Bread (v)**

**Marinated Chicken Wrap served with Chipped Potatoes, Peas or Baked Beans**

**Jacket Potatoes with Cheese, Beans or Tuna Mayo**

**Tomato & Basil Pasta (v)**

**Jacket Potatoes with Cheese, Beans or Tuna Mayo**

**Cheese Toastie served with Salad (v)**

**Selection of cold filled Tortilla Wraps**

**Yoghurt with a selection of toppings**

**Very Berry Jelly**

**Lorrie's Dessert of the Day**

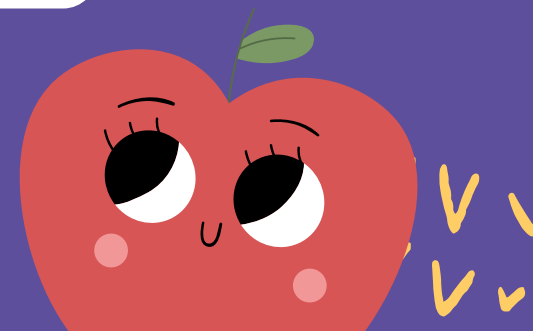
**Yoghurt with a selection of toppings**

**Assorted Ice creams**

**Salad Bar, Fresh Fruit & Yoghurts available daily**

**(v) vegetarian**

**Allergen information may be obtained by contacting the Catering Manager on 0121 464 3419 or [L.mcfie@billesleyschool.co.uk](mailto:L.mcfie@billesleyschool.co.uk)**



**Main Option One**

**Main Option Two**

**Light Bite**

**Dessert**



# BILLESLEY PRIMARY - WEEK THREE



## Meat Free Monday

## Tuesday

## Wednesday

## Meat Free Thursday

## Friday

**Smoky Veggie Sausage & Beans with Diced Potatoes & Seasonal Vegetables (v)**

**Loaded Baked Potato Bar Jacket Potatoes and Sweet Potatoes served with a choice of hot and cold fillings**

**McBillesley's Cheeseburger with Baked Potato Wedges, Baked Beans or Salad (v)**

**Plant-Powered Bolognaise Pasta served with Vegetables or Salad (V)**

**Breaded Fish Stars served with Chipped Potatoes, Peas or Baked Beans**

**Selection of Pizzas with Diced Potatoes, salad or Vegetables (v)**

**Chinese Chicken Curry Steamed Rice**

**Chicken Burger with Baked Potato Wedges, Baked Beans or Salad**

**Roast Vegetable Pinwheels served with Potatoes and Vegetables or salad (v)**

**Marinated Chicken Wrap served with Chipped Potatoes, Peas or Baked Beans**

**Jacket Potatoes with Cheese, Beans or Tuna Mayo**

**Tomato & Basil Pasta (v)**

**Jacket Potatoes with Cheese, Beans or Tuna Mayo**

**Cheese Toastie served with Salad (v)**

**Jacket Potatoes with Cheese, Beans or Tuna Mayo**

**Yoghurt with a selection of toppings**

**Strawberry Jelly**

**Lorrie's Dessert of the Day**

**Yoghurt with a selection of toppings**

**Assorted Ice creams**

**Salad Bar, Fresh Fruit & Yoghurts available daily**

**(v) vegetarian**

**Allergen information may be obtained by contacting the Catering Manager on 0121 464 3419 or [L.mcfie@billesleyschool.co.uk](mailto:L.mcfie@billesleyschool.co.uk)**



**Light Bite**

**Dessert**

